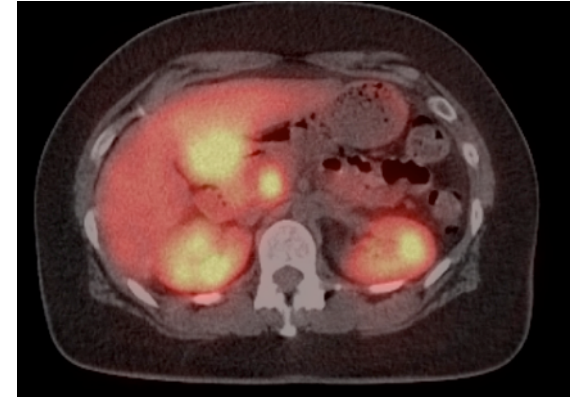


2014 Neuroendocrine Patient Conference

Hosted by: **NorCal CarciNET Community & UCSF Helen Diller Family Comprehensive Cancer Center**



Sunday, January 19, 2014

9:00 am to 4:00 pm

**New Location: Krutch Theater at the Clark-Kerr Campus at CAL Berkeley
2601 Warring St., Bldg. 14, Clark Kerr Campus, Berkeley**

Please join us for an educational day of discussion on the latest developments related to neuroendocrine tumors (NETs). From discovery and diagnosis to treatment and living with cancer (for patients and support givers) – experts from UCSF and Stanford, as well as from elsewhere in US and Europe will be on hand to share their insight regarding NETs.

For more information including registration for the event, please visit: norcalcarcinet.org

UCSF Helen Diller Family
Comprehensive
Cancer Center

